

## UPDATE

### HGV fatal accident rates

#### MTRU for Freight on Rail November 2018

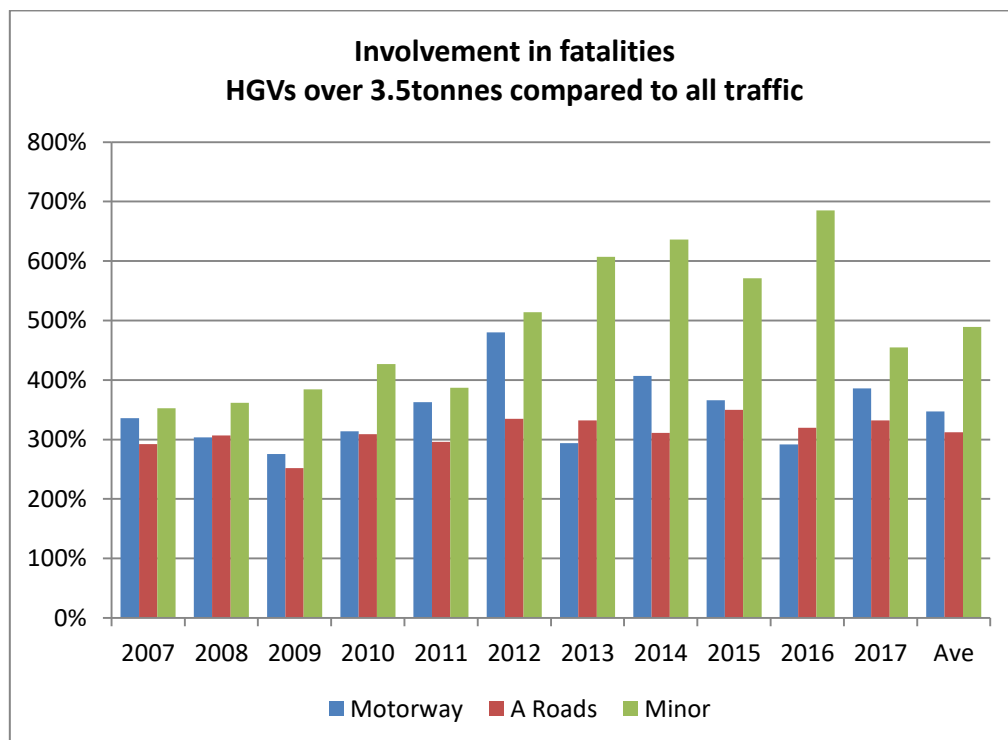
#### Introduction

In the 2008 MTRU report on HGVs, attention was drawn to UK data for 2007 showing that heavy goods vehicles are much more likely to be involved in fatal accidents per mile travelled than other vehicles, as shown in Table 1 below. This disaggregates the data to avoid any distortions caused by some vehicles travelling further on a type of road which has fewer accidents overall. The table has now been repeated for the years 2008-2017 (the latest year available).

What the tables set out, for the different categories of road, is the proportion of all vehicle traffic on that road type that is HGVs (DfT statistics define this as over 3.5tonnes gross vehicle weight). It compares this to the proportion of accidents causing fatalities that HGVs are involved in, again for the different road types. Thus in Table 1 HGVs were 12.2% of vehicle traffic on Motorways, but were involved in 41% of accidents resulting in fatalities. These two percentages are used to show how much more or less likely HGVs were to be involved in fatal accidents compared to an the average for all vehicles.

The highest absolute numbers (179 fatalities in 2017) were on A roads.

A chart illustrating the time series is set out below. It provides a consistent pattern of significantly higher involvement in fatalities, with some volatility on minor roads, although the absolute numbers are low and count data is less comprehensive.



The tables from which the chart is derived are set out below.

**Table 1**  
**HGV traffic and fatal accidents by road type 2007**

<i>Traffic in billion veh kms</i>	HGV traffic	All motorised traffic	HGV %	% fatalities involving at least 1 HGV	<b>Ratio of HGV to all motor vehicles</b>
<b>Motorway</b>	12.1	99.2	12.2%	41.0%	<b>336.0%</b>
<b>A</b>	13.3	226	5.9%	17.2%	<b>292.2%</b>
<b>Minor</b>	3.7	181.1	2.0%	7.2%	<b>352.6%</b>

Source: TSGB 2007, Goods Vehicle Statistics 2007, Goods Vehicle Accidents and Casualties 2007, all DfT

**Table 2 Updated using 2008 data**  
**HGV traffic and fatal accidents by road type**

<i>Traffic in billion veh kms</i>	HGV traffic	All motorised traffic	HGV %	% fatalities involving at least 1 HGV	<b>Ratio of HGV to all motor vehicles</b>
<b>Motorway</b>	12.1	100.1	12.1%	36.7%	<b>303.6%</b>
<b>A</b>	12.9	222.8	5.8%	17.8%	<b>306.9%</b>
<b>Minor</b>	3.7	185.9	2.0%	7.2%	<b>361.8%</b>

Source: Road Statistics 2008, Tables 3.2 and 3.6, Road Freight Statistics 2008 Section 5, both DfT

**Table 3 Updated using 2009 data**  
**HGV traffic and fatal accidents by road type**

<i>Traffic in billion veh kms</i>	HGV traffic	All motorised traffic	HGV %	% fatalities involving at least 1 HGV	<b>Ratio of HGV to all motor vehicles</b>
<b>Motorway</b>	11.2	98.9	11.3%	31.1%	<b>275.5%</b>
<b>A</b>	11.9	221.1	5.4%	13.6%	<b>252.0%</b>
<b>Minor</b>	3.2	181.1	1.7%	6.7%	<b>384.3%</b>

Source: Quarter 2 traffic report 2010, Road Freight Statistics 2009 Section 5, both DfT

**Table 4 Updated using 2010 data**  
**HGV traffic and fatal accidents by road type**

<i>Traffic in billion veh kms</i>	HGV traffic	All motorised traffic	HGV %	% fatalities involving at least 1 HGV	<b>Ratio of HGV to all motor vehicles</b>
<b>Motorway</b>	11.9	98.2	12.1%	38.1%	<b>314%</b>
<b>A</b>	11.4	219.6	5.2%	16.1%	<b>309%</b>
<b>Minor</b>	3.1	178.2	1.7%	7.3%	<b>427%</b>

Source: Traffic statistics table TRA0104, Accident statistics Table RAS 30017, both DfT

**Table 5 Updated using 2011 data**  
**HGV traffic and fatal accidents by road type**

<i>Traffic in billion veh kms</i>	HGV traffic	All motorised traffic	HGV %	% fatalities involving at least 1 HGV	<b>Ratio of HGV to all motor vehicles</b>
<b>Motorway</b>	11.0	98.9	11.2%	40.6%	<b>363%</b>
<b>A</b>	11.7	219.2	5.3%	15.7%	<b>296%</b>
<b>Minor</b>	2.6	168	1.5%	5.8%	<b>387%</b>

Source: Traffic statistics table TRA0104, Accident statistics Table RAS 30017, both DfT

**Table 6 Updated using 2012 data**  
**HGV traffic and fatal accidents by road type**

<i>Traffic in billion veh kms</i>	HGV traffic	All motorised traffic	HGV %	% fatalities involving at least 1 HGV	<b>Ratio of HGV to all motor vehicles</b>
<b>Motorway</b>	10.9	99.8	10.9%	52.3%	<b>480%</b>
<b>A</b>	11.7	217.3	5.4%	18.1%	<b>335%</b>
<b>Minor</b>	2.4	167.0	1.4%	7.2%	<b>514%</b>

Source: Traffic statistics table TRA0104, Accident statistics Table RAS 30017, both DfT

**Table 7 Updated using 2013 data**  
**HGV traffic and fatal accidents by road type**

<i>Traffic in billion veh kms</i>	HGV traffic	All motorised traffic	HGV %	% fatalities involving at least 1 HGV	<b>Ratio of HGV to all motor vehicles</b>
<b>Motorway</b>	11.1	101.9	10.9%	32.0%	<b>294%</b>
<b>A</b>	11.6	218.7	5.3%	17.6%	<b>332%</b>
<b>Minor</b>	2.4	168.4	1.4%	8.5%	<b>607%</b>
<b>All</b>	25.3	489.0	5.2%	15.1%	<b>290%</b>

Source: Traffic statistics table TRA0104, Accident statistics Table RAS 30017, both DfT

**Table 8 Updated using 2014 data**  
**HGV traffic and fatal accidents by road type**

<i>Traffic in billion veh kms</i>	HGV traffic	All motorised traffic	HGV %	% fatalities involving at least 1 HGV	<b>Ratio of HGV to all motor vehicles</b>
<b>Motorway</b>	11.6	104.3	11.1%	44.8%	<b>407%</b>
<b>A</b>	11.7	223.0	5.3%	16.5%	<b>311%</b>
<b>Minor</b>	2.4	174.4	1.4%	8.9%	<b>636%</b>
<b>All</b>	25.9	501.7	5.2%	15.1%	<b>290%</b>

Source: Traffic statistics table TRA0104, Accident statistics Table RAS 30017, both DfT

**Table 9 Updated using 2015 data**  
**HGV traffic and fatal accidents by road type**

<i>Traffic in billion veh kms</i>	HGV traffic	All motorised traffic	HGV %	% fatalities involving at least 1 HGV	<b>Ratio of HGV to all motor vehicles</b>
<b>Motorway</b>	12.2	107.1	11.4%	41.7%	<b>366%</b>
<b>A</b>	12.3	227.0	5.4%	18.9%	<b>350%</b>
<b>Minor</b>	2.4	175.8	1.4%	8.0%	<b>571%</b>
<b>All</b>	26.9	509.9	5.3%	16.3%	<b>308%</b>

Source: Traffic statistics table TRA0104, Accident statistics Table RAS 30017, both DfT

**Table 10 Updated using 2016 data**  
**HGV traffic and fatal accidents by road type**

<i>Traffic in billion veh kms</i>	HGV traffic	All motorised traffic	HGV %	% fatalities involving at least 1 HGV	<b>Ratio of HGV to all motor vehicles</b>
<b>Motorway</b>	12.4	109.2	11.4%	33.3%	<b>292%</b>
<b>A</b>	12.2	231.5	5.3%	17.0%	<b>320%</b>
<b>Minor</b>	2.3	180.3	1.3%	8.9%	<b>685%</b>
<b>All</b>	26.7	521.2	5.1%	14.9%	<b>292%</b>

Source: Traffic statistics table TRA0104, Accident statistics Table RAS 30017, both DfT

**Table 11 Updated using 2017 data**  
**HGV traffic and fatal accidents by road type**

<i>Traffic in billion veh kms</i>	HGV traffic	All motorised traffic	HGV %	% fatalities involving at least 1 HGV	<b>Ratio of HGV to all motor vehicles</b>
<b>Motorway</b>	12.7	110.6	11.5%	44.4%	<b>386%</b>
<b>A</b>	12.4	235.9	5.3%	17.6%	<b>332%</b>
<b>Minor</b>	2.3	180.3	1.3%	5.9%	<b>455%</b>
<b>All</b>	27.4	526.6	5.2%	14.9%	<b>287%</b>

Source: Traffic statistics table TRA0104, Accident statistics Table RAS 30017, both DfT

**Table 12: 11 Year average ratio of HGV to all motor vehicles**

<b>Motorway</b>	<b>347%</b>
<b>A</b>	<b>312%</b>
<b>Minor</b>	<b>489%</b>